

19 THE BULLDOG 50






The

1950

BULLDOG

Published by
Students of
SWEENEY HIGH SCHOOL
Sweeny, Texas



Foreword

Another year at Sweeny High School has passed—a year filled with pleasant experiences and happy memories. These are clear and real now, and we who have published this book hope that *THE 1950 BULLDOG* will enable you to recall these memories through all the years to come.

ANNUAL STAFF

Dedication



Because of our appreciation for the kindness, patience, deep understanding, and spirituality of our leader and superintendent, we, the Annual Staff of 1950, dedicate this annual to Mr. A. T. Bledsoe, our friend.

BOARD OF EDUCATION

The Annual Staff, on behalf of the faculty and student body of the Sweeny Schools, wishes to express its appreciation for your part in making the school year of 1949-1950 most enjoyable and memorable. The thought, time, and effort which you have devoted to the establishment of policies and making of decisions have meant a great deal to us.

The positions which you occupy as members of the Board of Education are esteemed in this community. In the discharge of your various duties, you have honorably fulfilled the trust which the people of Sweeny and surrounding areas have placed in you.

ANNUAL STAFF

Jimmy Poole

Editor



ADMINISTRATION

ADMINISTRATION



A. T. BLEDSOE
Superintendent



O. D. MISER
High School Principal



MRS. VADES RICHARDSON
Elementary Principal

FACULTY

A. O. EVANS
Business Manager
MARGIE KOONCE
Secretary



BERTHA BARCLAY
HARRY BEVERLY
LALLIE CARTER



GLORIA CRAIN
MARIE CURREY
REBECCA CYRUS



ANNIE ROSE EUSTACE
VERA FRIDAY
RUBY HEICKMANN



YVONNE HOLBROOK
ELIZABETH HUDSON
MABLE P. JACKSON



MORRIS JARRETT
CHARLES KELSO
ETHEL LOONEY



FACULTY



EULA MARTIN
ERA McDONALD
J. F. MICHAEL



JO MILNER
THELMA MITCHELL
NEDRA OGLE



J. MERLE RYMAN, JR.
ELIZABETH SCHUCHARDT
JOE SCHUCHARDT



F. F. SMITH
BETTY JO SPENCER
HAROLD SPENCER



MELITA STOKER
ETTA VAUGHN
PATRICIA WALKER



MAURINE WILLIAMS
BILLY WILSON
OLA MAE WOODS

STUDENT COUNCIL



Daniel Williamson, *President*
Joe Schuchardt, *Faculty Advisor*



OFFICERS

- President*
Daniel Williamson
- Vice-President*
Carolyn Woodward
- Secretary*
Agatha Holland
- Treasurer*
Gail Daly
- Parliamentarian*
Billy Curry

MEMBERS

- Daniel Williamson
Carolyn Woodward
- Senior Representatives:*
Billy Curry
Jane Wells
- Junior Representatives:*
Gail Daly
Agatha Holland
- Sophomore Representatives:*
Charles Smith
Donna Dee Jones
- Freshmen Representatives:*
Shirlene Matson
Jesse Williamson

CAFETERIA STAFF



Mrs. H. H. Hooper, Mrs. Amos Augsburg, Mrs. Joe Kuban, Mrs. B. E. Hooper, Mrs. W. D. Finley, Mrs. Ed Matson, Mrs. F. F. Smith—Head Cook, Mrs. John A. Elliott—Manager, Mr. Ed Matson.

CUSTODIANS



John A. Elliott, Arnold Harvill, Bill Cantrell, Joe Kuban, W. B. Sheffield.



SENIORS

SENIORS



ARTHUR BARFIELD

1946-47 Spanish Club.
1947-48 Spanish Club, Basketball.
1948-49 Basketball, Football.
1949-50 Basketball, Football (All-District), Class Favorite.



REBA BRADY

1946-47 Home Economics Club, Choral Club, Class Officer.
1947-48 Home Economics Club, Class Officer, Class Favorite.
1948-49 Junior Play.
1949-50 4-H Club, Senior Play.



JOYCE CHAMBLESS

1946-47 Pep Squad, Majorette.
1947-48 Rainbow Girls, F.H.A., Majorette.
1948-49 Junior Play, Majorette.
1949-50 Senior Play, Majorette.



WINCIE CHENAULT

1946-47 Sextette, Chorus, Pep Squad, 4-H, Volleyball, Spanish Club.
1947-48 Football Maid, Pep Squad, Basketball, Spanish Club, Class Officer, Volleyball.
1948-49 Class Officer, Junior Play, Girls' State, Pep Squad, Basketball, Annual Staff.
1949-50 Pep Squad, Senior Play, Annual Staff.

SENIORS

JO ANN CRUMLEY

- 1946-47 Football Maid, Pep Squad, 4-H Club, Basketball, Volleyball, Spanish Club, Class Favorite, Princess in Halloween Carnival.
1947-48 4-H Club, Basketball, Pep Squad, Volleyball, Spanish Club.
1948-49 Junior Play, Basketball Captain, Volleyball, Pep Squad, Class Favorite.
1949-50 4-H Club, Pep Squad, Queen Candidate at Brazoria County Fair.



BILLY CURRY

- 1946-47 Football, Baseball, Spanish Club, Band, 4-H Club.
1947-48 Football (All-District), Baseball, Spanish Club, Band, 4-H, Track.
1948-49 Football, Baseball, Band, 4-H, Boys' State, Basketball, Track, Junior Play.
1949-50 Football (All-District), 4-H, Basketball, Baseball, Senior Play, Student Council.



JESSIE EBERHART

- 1946-47 Majorette, Basketball.
1947-48 Drum Major, Basketball, H.E. Club, Spanish Club.
1948-49 Drum Major, Assistant Manager Basketball, Junior Play, Band Officer.
1949-50 Drum Major, Basketball Manager, Y-Teen, Class Favorite.

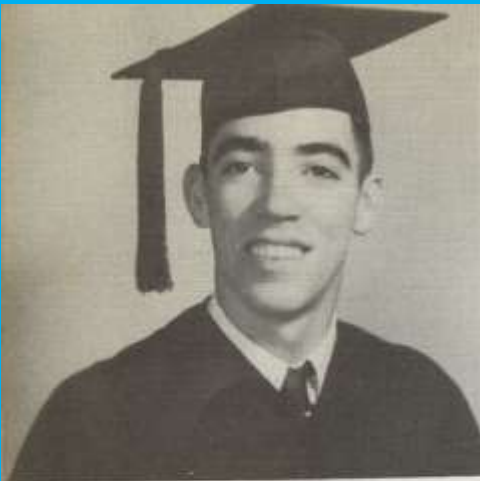


IRIS LYNN FELDER

- 1946-47 Class Officer, Home Economics Club, Spanish Club, Pep Squad, 4-H, Choral Club.
1947-48 H.E. Club, Spanish Club, Pep Squad, Basketball, Volleyball.
1948-49 Class Officer, Paper Staff, Pep Squad.
1949-50 Class Officer, Pep Squad, Choral Club, YWCA.



SENIORS



LEO FINLEY

1946-47 Spanish Club.
1947-48 Basketball, Spanish Club.
1948-49 Basketball.
1949-50 Basketball.



RICHARD FINLEY

1946-47 Football, Basketball, Spanish Club, Class Officer, Band.
1947-48 Football, Basketball, Spanish Club.
1948-49 Junior Play, Class Favorite, Football, Basketball, Baseball.
1949-50 Football, Basketball, Baseball, Class Favorite.



OTTO GUTIERREZ

1946-47 Spanish Club.
1947-48 Spanish Club, Basketball, Choral Club.



BESSIE HAMMOND

1946-47 Cheerleader, Band, H.E. Club, Sextette, Chorus, Basketball, Spanish Club, 4-H.
1947-48 Cheerleader, Basketball, Volleyball, Band, H.E. Club, 4-H.
1948-49 Basketball, Cheerleader, Volleyball, Band, Junior Play, Paper Staff, Annual Staff.
1949-50 Class Favorite, Band Sweetheart, Band, Basketball Captain, F.H.A., Senior Play, Annual Staff.

SENIORS

LENA HUBBARD

- 1946-47 Homemaking Club, Pep Squad, 4-H Club, Choral Club, Volleyball.
1947-48 H.E. Club, Pep Squad, Basketball, Volleyball.
1948-49 4-H Club, Pep Squad, Basketball, Volleyball.
1949-50 H.E. Club, Pep Squad, Class Favorite, Volleyball, Basketball Co-Captain.



BILLY KITTMAN

- 1946-47 4-H Club, Band.
1947-48 4-H Club, Choral Club, Band.
1948-49 4-H Club, Band.
1949-50 4-H Club, Band, Senior Play.



LARRY LUMPKIN

- 1946-47 Spanish Club.
1947-48 Spanish Club, 4-H Club.
1948-49 4-H Club, Junior Play.
1949-50 4-H Club, Senior Play.



LAVERNE MOERS

- 1946-47 Library Club, F.H.A.
1947-48 Library Club, F.H.A., Paper Staff.
1948-49 Pep Squad.
1949-50 F.H.A., "Keynotes," Pep Squad.

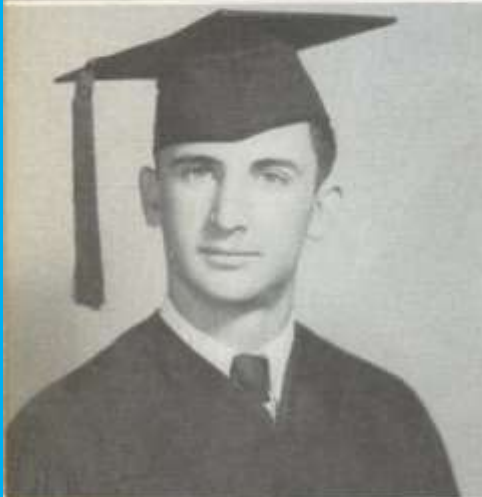


SENIORS



DOLORES PAXTON

- 1946-47 Pep Squad, F.H.A., Semper Fidelis Club.
- 1947-48 Pep Squad, F.H.A., Semper Fidelis Club, Spanish Club.
- 1948-49 Pep Squad, Spanish Club, Junior Play, Class Favorite, Annual Staff, Football Maid, Alternate to Girls' State.
- 1949-50 Pep Squad, F.H.A., Senior Play, Football Maid, Annual Staff.



JIMMY POOLE

- 1946-47 Football, Basketball, Baseball, Choral Club, Spanish Club, 4-H Club.
- 1947-48 Class Favorite, Class Officer, Basketball, Football, Baseball, Spanish Club, 4-H Club.
- 1948-49 Football, Basketball, Baseball, Track, Class Officer, Class Favorite, Annual Staff, Junior Play, Boys' State, 4-H Club.
- 1949-50 Class Officer, Class Favorite, Football Co-Captain, Basketball, Baseball, Annual Staff.



MONA LEE WALLACE

- 1946-47 Chorus, Pep Squad, H.E. Club, Spanish Club, 4-H Club.
- 1947-48 Pep Squad, H.E. Club, 4-H Club.
- 1948-49 Chorus, Pep Squad.
- 1949-50 Chorus, Pep Squad.



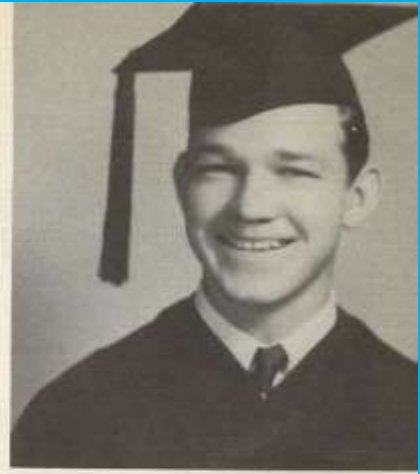
JANE WELLS

- 1946-47 Spanish Club, H.E. Club, Band, Basketball, Volleyball, Pep Squad, 4-H Club, Choral Club.
- 1947-48 Spanish Club, H.E. Club, Football Maid, Class Favorite, Basketball, Volleyball, Band.
- 1948-49 Annual Staff, Paper Staff, Band, Basketball, Volleyball, Class Officer, Football Maid, Junior Play, Alternate to Girls' State.
- 1949-50 Annual Staff, Band, Basketball, Class Officer, Football Sponsor, Student Council, Best-All-Round Girl, Senior Play, Keynotes

SENIORS

DANIEL WILLIAMSON

- 1947-48 Track.
- 1948-49 Football, Baseball, Track, Junior Play.
- 1949-50 Football, Baseball, Class Favorite, Senior Play, President Student Council, Spanish Club, Delegate to State TASC Convention.

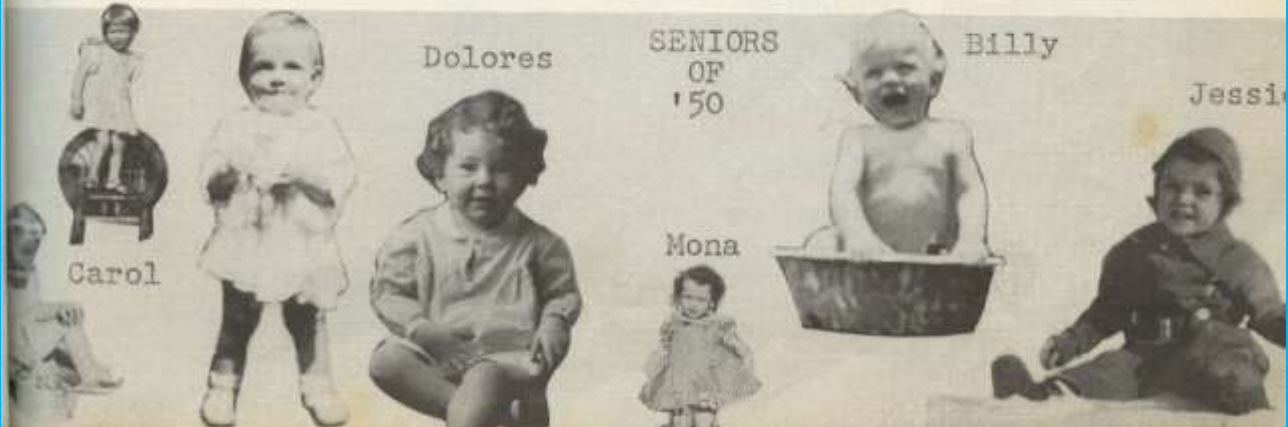


RALPH WILSON



CAROLYN WOODWARD

- 1946-47 Choral Club, Pep Squad, Basketball, Volleyball.
- 1947-48 Choral Club, Spanish Club.
- 1948-49 Junior Play, Girls' State, Pep Squad, Spanish Club.
- 1949-50 Keynotes, Senior Play, Class Officer, Student Council, F.H.A. Football Maid, Pep Squad, High School Reporter.







J U N I O R S

JUNIORS



Gus Alford
Louise Boden



Joy Marie Caraway
Derald Carwile



Leo Chambless
Exa Mae Chambliss



Billy Matt Christian
Dorothy Fae Cole

JUNIORS

Gail Daly
W. L. Edmonds



Ernie Ellis
Elsie Lea Evans



Jane Goodman
Wanda Hicks



Agatha Holland
Betty Jo Horn



JUNIORS



Billy Jones

Rex Keller



Betty Marie Orr

Jo Ann Parr



Sara Parten

Clifford Strid



Joyce Weaver

Edna West



S O P H O M O R E S

SOP



Flora Baimbridge
J. C. Barclay
Bobby Barfield



Bobbie Jean Brady
Dewana Carwile
Roger Cochran



Willine Crosson
Charlene Diehl
Daniel Fortenberry



Jack Frost
Wanda Hall
Sammy Holloway

MORES

Evelyn Johnson
Donna Dee Jones
David Laird



Carole Lipscomb
Eston Lloyd
Lexie Machac



Jo Ann Mays
Jo Ann McKinney
Perry McNeill



Cecelia Ogle
George Parks
Charles Smith



SOPHOMORES



June Weeks
Joe White



J. P. Williams
Janice Younts





F R E S H M E N

FRESHMEN



Ruby Lee Alford
Charles Allen
J. C. Bailey
Roland Boone



John Brooks
Frank Bruce
Bobby Carter
Verna Beth Chambliss



Ruth Chenault
Mickey Christian
John Crawford
Kay Eberhart



Edith Edmonds
Dan Ellis
Billy Ray Finley
Joe Finley



Roy Finley
Doris Goodman
Margo Gutierrez
Elva Hall



Martin Hall
Betty Sue Harris
Kerry Keller
Jessie Kurtz

FRESHMEN

Barbara LeCompte
Shirlene Matson
Bobby Nairn
Mary Nusz



Billy O'Banion
Noma Orr
Shirley Orr
James Patterson



Myra Su Paxton
Jerry Phillips
George Rayburn
Helen Sanders



Truett Slaughter
Mildred Smith
Hope Thurber
Barbara Wallace



Ivan Weaver
Shirley Weldon
Sidney Whitlock
Jesse Williamson



Kitty Rose Willis
Wilma Windham
Carl Woodward



In Memoriam



DICKEY CHRISTIAN



JUNIOR HIGH

EIGHTH GRADE



Back row: J. Slay, G. Wells, B. Clark, B. Head, K. Finley, C. Dike, P. Whaley, J. Price, J. Bannister, J. Eargle, C. Finley, M. Collier, F. Allen, Front row: F. Hammond, E. Johnson, C. Weeks, K. Fulilove, J. Philip, B. Hubbard, A. Poole, B. Strid, G. Orr, G. Penton, A. Crisp, G. Bland, R. Boone.

SEVENTH GRADE



Back row: J. Duncan, K. Barton, M. Nash, J. Fortenberry, J. R. Jordan, J. Horne, Front row: H. R. White, A. Edmonds, N. Willis, M. L. Orr, M. Hood, S. Moers, L. A. Felder.

SEVENTH GRADE

21



Back row: B. Ashley, H. Gaddy, W. Culpepper, D. Hall, G. Harvey, M. Longby, A. Catchings, R. Johnson. Second row: M. Orr, A. Grady, A. Lindsey, B. Tisdale, B. Eberhart, J. Woodward, J. Burchfield, V. West, A. Brady. First row: P. Schults, F. Holloway, L. Heckmann, L. Finley.

SEVENTH GRADE

21



Back row: B. Sanders, W. Christian, S. Kahla, B. Jones, D. Cochran, R. Brackman, V. Wilhelm, G. Meador, G. Wittge, J. Ashcraft. Front row: S. Slaughter, L. Smith, E. Hughes, B. McElroy, A. J. Cundiff, J. Ragus, E. Cantrell, A. B. Finley, M. Hooper, B. Hendershot, B. R. Terrell.





E L E M E N T A R Y

SIXTH GRADE



Back row: J. Barber, P. Payne, B. Hughes, P. Caraway, B. Hansen, S. Honea, M. A. Woodall, A. Talbert, V. Harvill. Second row: J. Allen, L. Baimbridge, W. Palmer, S. Johnson, J. Boleyn, A. Meador, T. Laird, J. Orr, G. Steubing, T. Holcomb. First row: T. Durham, M. Morris, L. Plunk, J. Finley, M. Cato, D. Slaughter, W. Surber.

SIXTH GRADE



Back row: B. Ward, C. Wallace, W. Alford, C. Parsons, B. Weaver, C. Goodman, B. R. Thomas, B. Head, T. Crosson, L. Marks, K. Johnson. Second row: J. A. Dentler, P. Caraway, S. Boone, V. Wallace, C. Jordan, C. Slaughter, B. Mullenix, D. Valchar, J. Cochran, C. Reyes, B. McEntire. First row: C. S. Sunderland, L. Williams, R. Matson, G. Lipscomb, M. Johnson.

FIFTH GRADE



Back row: D. Clark, J. Polensky, B. Lazalier, L. Philp, J. Weeks, R. Early, L. R. Crawford. Second row: J. Crosson, L. Graham, M. Heckman, E. Lambden, S. Kahla, D. Weaver. First row: C. Bledsoe, G. Holland, L. Mercer, G. McEntire, L. Thomas, D. Meadow.

FIFTH GRADE



Back row: V. Gibson, M. Alford, J. D. Massey, B. W. Weeks, C. Grover. Second row: R. Capeheart, N. Cundieff, E. Neptune, T. Hicks, D. Ragus, P. Orr, B. L. Grady, B. Spain. First row: P. W. Wilkinson, O. Hooper, D. Orr, P. Lutes, C. Barton, W. Hood, S. Barclay.

FIFTH GRADE 20



Back row: C. Shannon, A. Catchings, W. Morris, E. Kamman, L. Wallace, P. LaForge.
 Second row: A. LaForge, A. Ross, T. Goodson, M. Finley, M. Crosson, B. Hammond,
 M. Tindol, H. F. Smith. First row: V. M. Harvill, G. Burchfield, A. L. Smith, B. A.
 Bowles, E. Moody, G. Eargle.

FOURTH GRADE 20



Back row: G. Wilkinson, J. Tindol, S. McElroy, J. Reyes, J. Crisp, R. Gutierrez, D. Hyatt,
 W. LeCompte. Second row: L. Plunk, N. Boden, M. Orr, J. Murray, G. Thomas, T.

FOURTH GRADE 24



Back row: C. Culpepper, J. Richers, R. L. Hopper, E. Burt, B. Lanmon, F. Krenck, L. Talbot. Second row: R. Lout, J. Conkle, T. Compton, B. Smart, G. Koenig, N. Dodd, L. Loyd, L. Hendershot. First row: J. Lawless, E. Walters, L. Alford, S. Boleyn, B. S. Kammon, G. Hopper, P. Tillman, N. Brown.

FOURTH GRADE 22



Back row: R. Franklin, A. Laird, A. Fite, B. Shaw, B. Howell, A. Reyes. Second row: V. Patterson, P. Strunk, M. A. Terrell, I. J. Brown, J. Parkinson, D. Cochran, J. Gutierrez, G. Griffin. First row: D. Yates, L. Carwile, B. Anderson, J. B. Bailey, R. Roberts, R. L. Crosson, B. Fullilove, A. Gutierrez.

THIRD GRADE 15



Back row: C. Price, B. Crainer, M. Harvey, B. L. Johnson, Y. Thomas, L. Voucher, C. R. Goodson, R. Garza. Second row: W. Barker, J. Burt, J. Williams, C. Stewart, L. Hazel, A. Surber, W. Capeheart, L. Neptune. First row: W. Gaddy, M. J. Lanmon, G. Cam, C. H. Philip, D. Sheffield, P. Sykes, J. D. Wallace, J. Ashley, J. P. Lindsey.

THIRD GRADE 24



Back row: F. Duncan, B. Chenault, B. G. Williams, D. Boone, V. Finley, D. Wallace, J. McManus, G. Weldon. Second row: N. Ordonez, S. Burchfield, G. Jordan, M. J. Glick, B. Burkett, C. Shaw, S. Christian, D. Eberhart. First row: L. Kostelnik, B. J. Jones, D. Broadway, L. Weldon, D. Huff, K. Hudnall, A. McInnis.

THIRD GRADE

18



Back row: E. Cordero, V. R. Larsbden, J. N. Payne, J. Camp, J. Campbell, C. Richers.
Second row: T. Baimbridge, T. Hill, C. Crosson, J. M. Polensky, B. Nash, D. J. Harmond.
First row: R. Orr, F. Weaver, S. Curtis, W. Hooper, E. Broadway, S. Burchfield.

SECOND GRADE

19



Back row: O. Berndt, G. Thames, S. Steubing, J. Parkinson, C. LaForge, C. Broadway, B. Pierson.
Second row: B. Scruggs, J. Caraway, M. Ordonez, C. A. Cole, L. Kennedy, C. O'Banion, F. Syptak.
First row: J. Horn, P. Surbèr, B. Krenek, J. Manley, M. Prince, M. Johnson, M. S. Orr, A. Bailey.

SECOND GRADE 23



Back row: A. Crainer, S. McSpadden, L. Witt, A. Flores, R. Griffin, R. Blair, G. Scanlan.
Second row: E. Ashbrook, R. Lindsey, B. Compton, F. Langley, H. B. Grady, G. Hooper,
C. Decroz, W. Tindol, J. Lutes. First row: W. Crosson, B. Harris, M. Duncan, E. Sykes,
B. Johnson, B. Pierson, B. Bailey, S. Hunter, B. Horn, J. Holland.

24 SECOND GRADE



Back row: F. Barrientez, N. Hubbard, D. Younts, J. Rodgers, S. A. Sunderland, J.
Rodgers, E. Pierce. Second row: D. Woods, M. Newman, B. J. Merimon, B. Lee, S.
Strunk, B. Weems, W. M. Hock, S. Thomas. First row: I. LeFevre, R. Harwell, C.
Wilkinson, T. Barfield, J. A. Hitchcock, G. Bledsoe, K. Hunter, A. Meador.

FIRST GRADE 24



Back row: J. Haynes, H. Elliott, T. Hopper, F. LaBelle, D. Lipps, J. McEntire, L. Weldon, A. McClintock. Second row: R. Ward, M. Baimbridge, A. McBride, R. Weems, C. Phillips, G. Sheffield, J. Rice, R. Ashley. First row: D. Huff, L. Mickey, D. Richardson, S. J. Stephens, C. Holland, L. A. Shaw, A. DeLay, J. Mayer.

FIRST GRADE 27



Back row: S. Gutierrez, C. Kammon, C. Hammond, S. Heath, D. Weaver, J. Moers, R. T. Stockman. Second row: R. McCully, S. Horn, G. Cordero, L. Klahn, A. Broadway, B. Hooper, J. Garza. First row: L. Barrentiez, F. Nuchols, L. Conkle, T. Chambliss, B. Crawford, B. Scruggs, M. Prince, J. Wilhelm.

FIRST GRADE



Back row: E. Richter, L. Harvey, S. Clements, R. Ward, C. Long, E. Finley, R. Finley, V. Skrabanek. Second row: J. Lawless, B. Scruggs, A. Waldby, J. Reyes, L. Gutierrez, C. Hughes, N. Cochran, G. Sewell, J. LaForge. First row: B. Sandlin, M. Anderson, J. F. Payne, J. Winscott, J. Barker, C. Scarborough, R. Jenkins, J. Burchfield, B. Skotnik, D. Patterson.

In Memoriam

JANICE BARBER
Sixth Grade





F A V O R I T E S



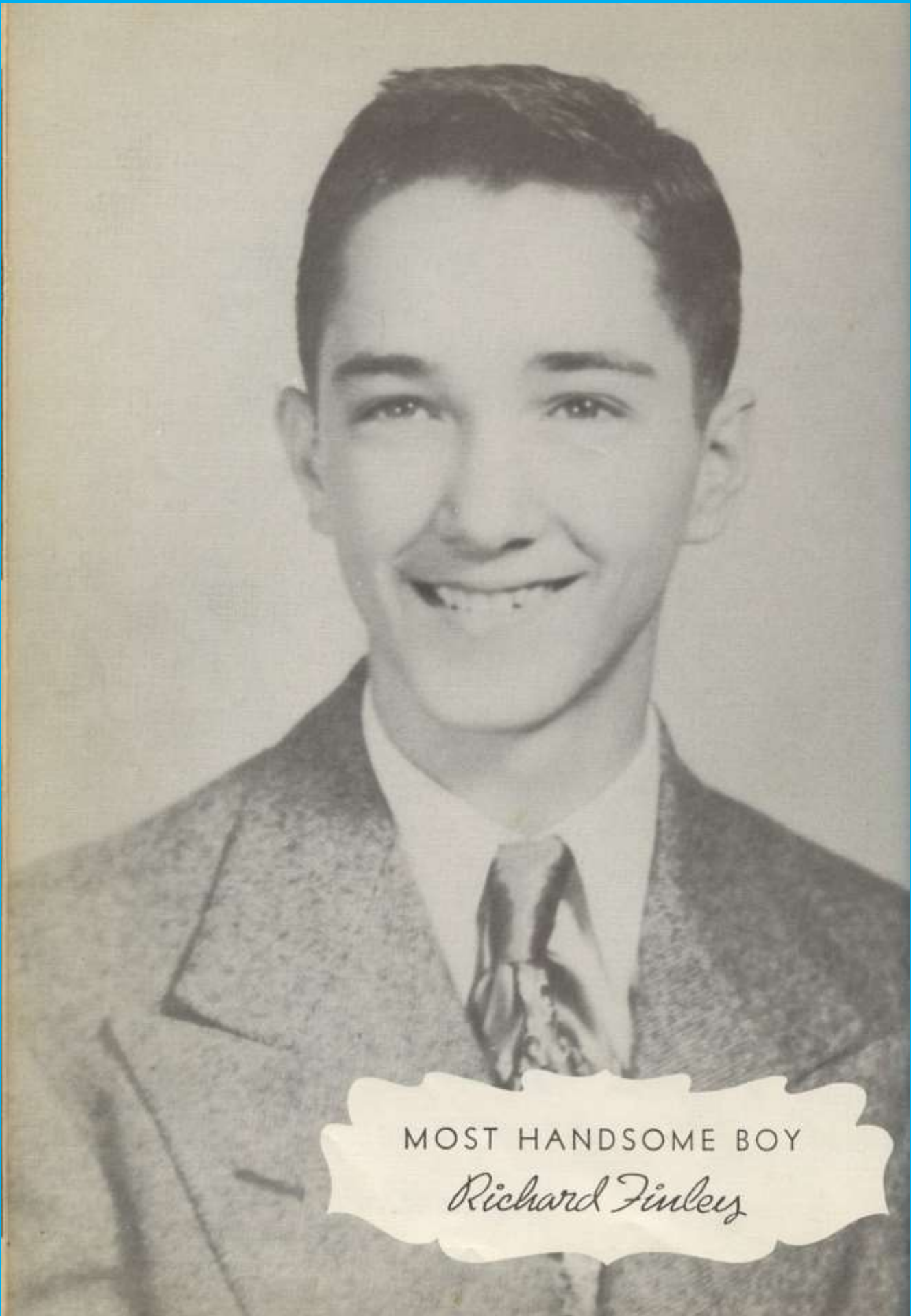
BEST ALL ROUND BOY

Arthur Barfield



BEST ALL ROUND GIRL

Jane Wells



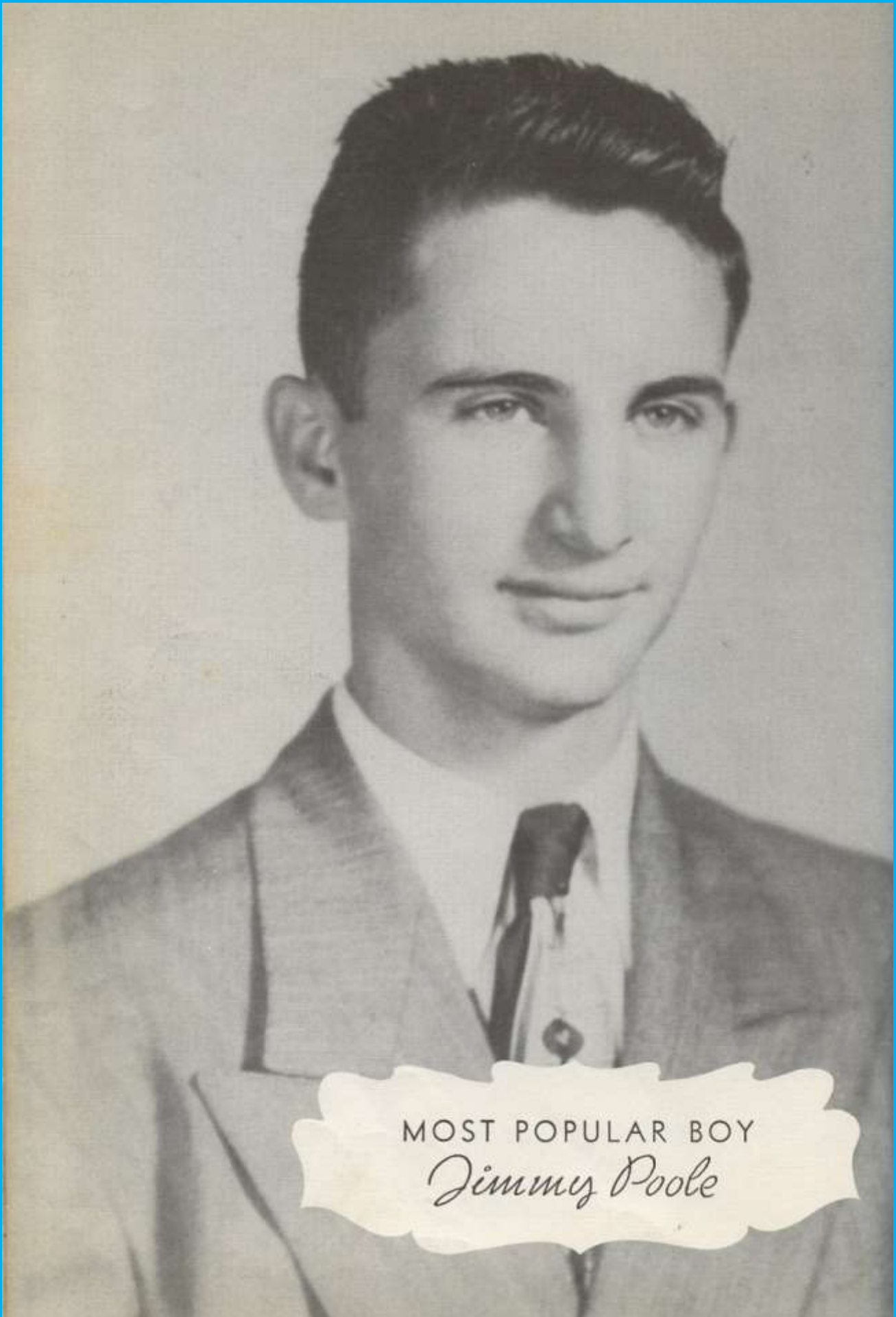
MOST HANDSOME BOY

Richard Finley



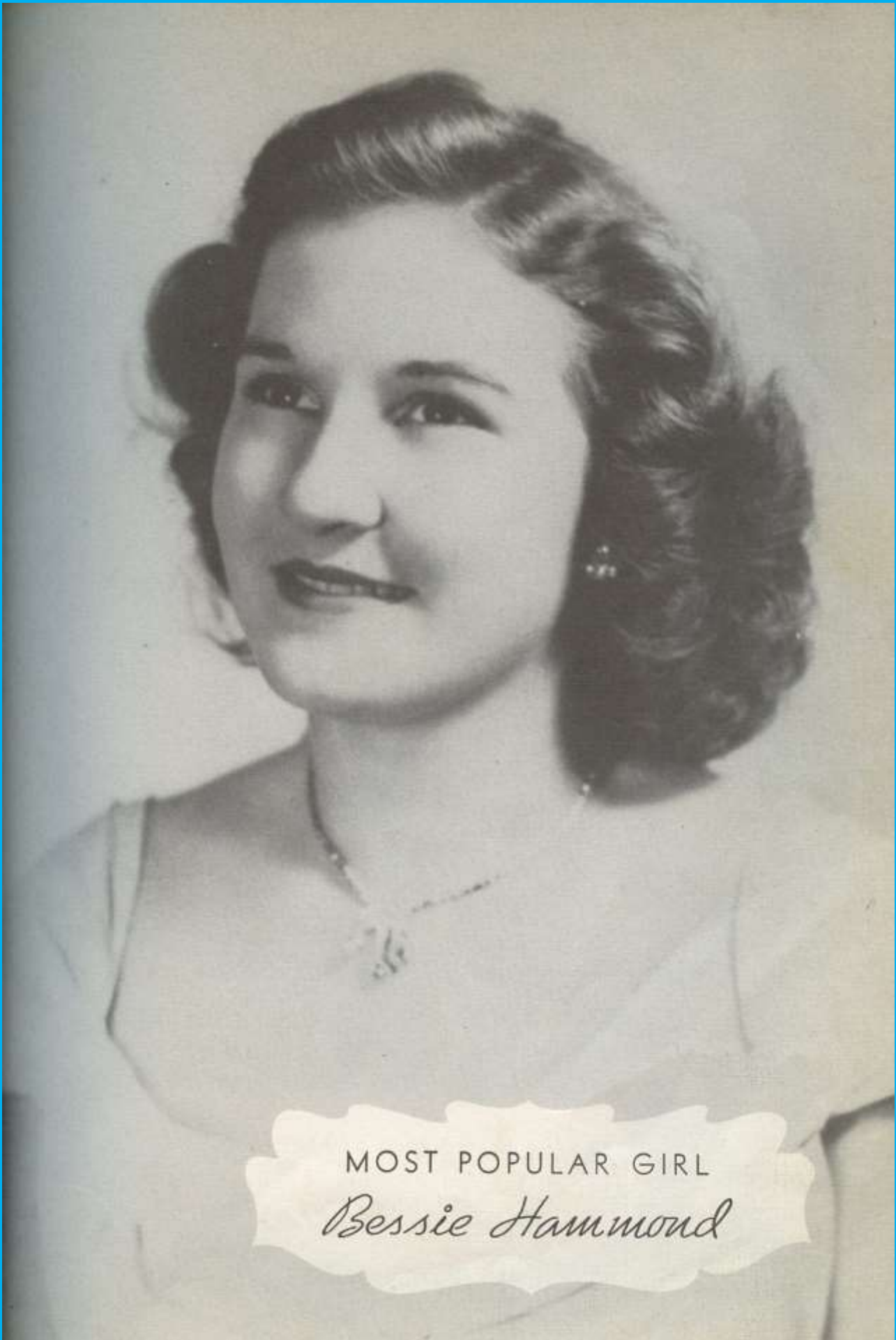
MOST BEAUTIFUL GIRL

Lena Hubbard



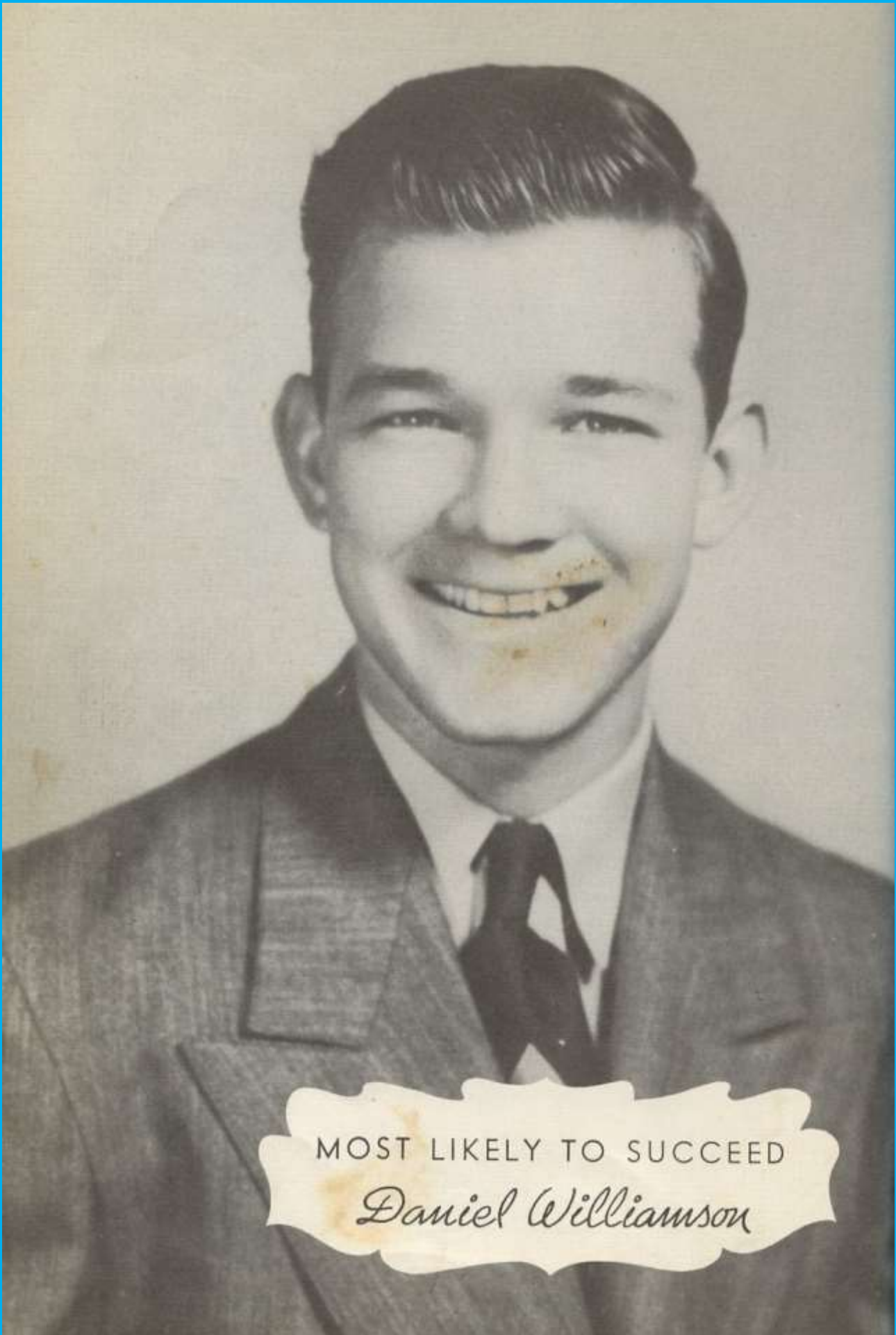
MOST POPULAR BOY

Jimmy Poole



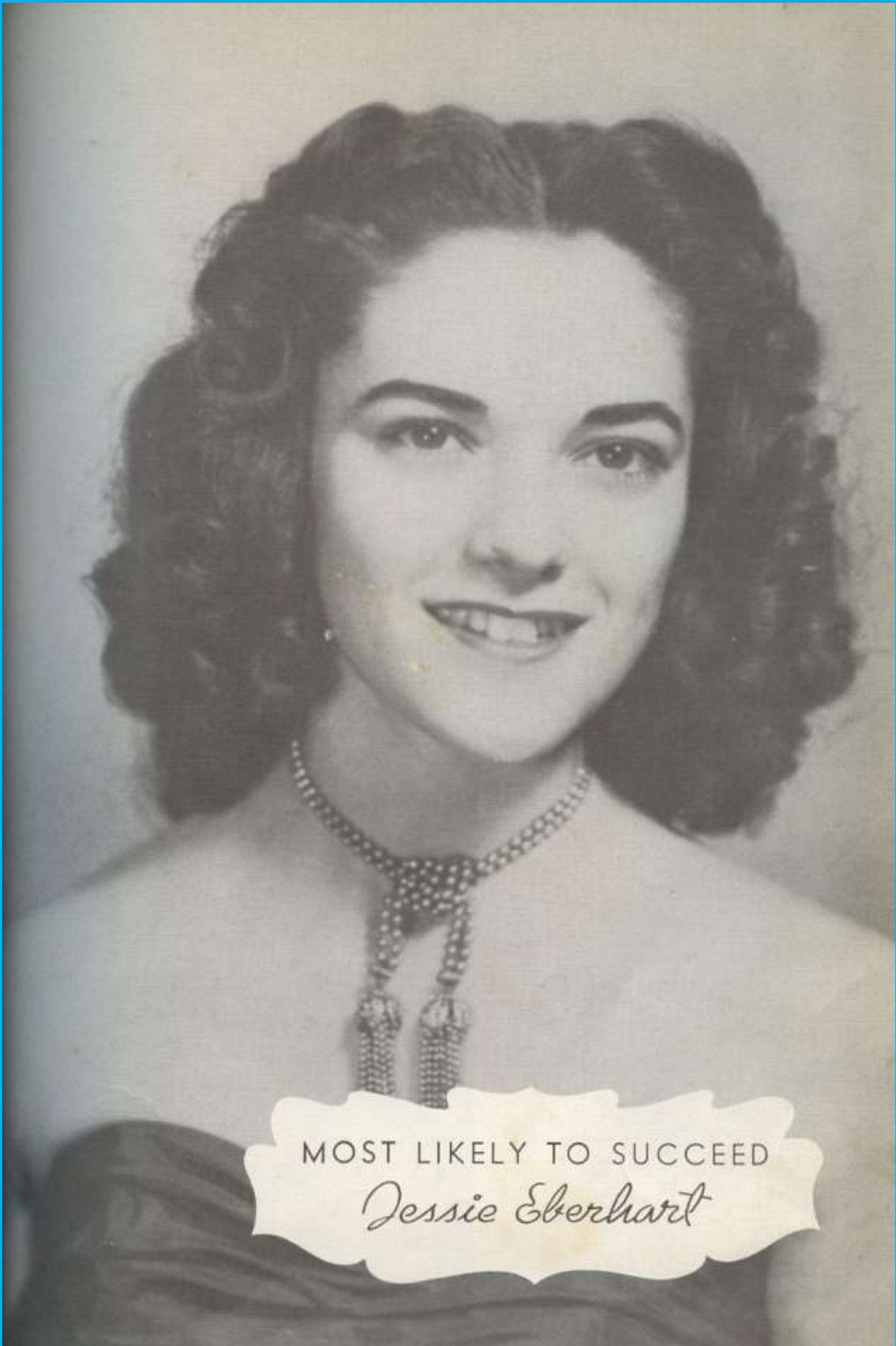
MOST POPULAR GIRL

Bessie Hammond



MOST LIKELY TO SUCCEED

Daniel Williamson



MOST LIKELY TO SUCCEED

Jessie Eberhart



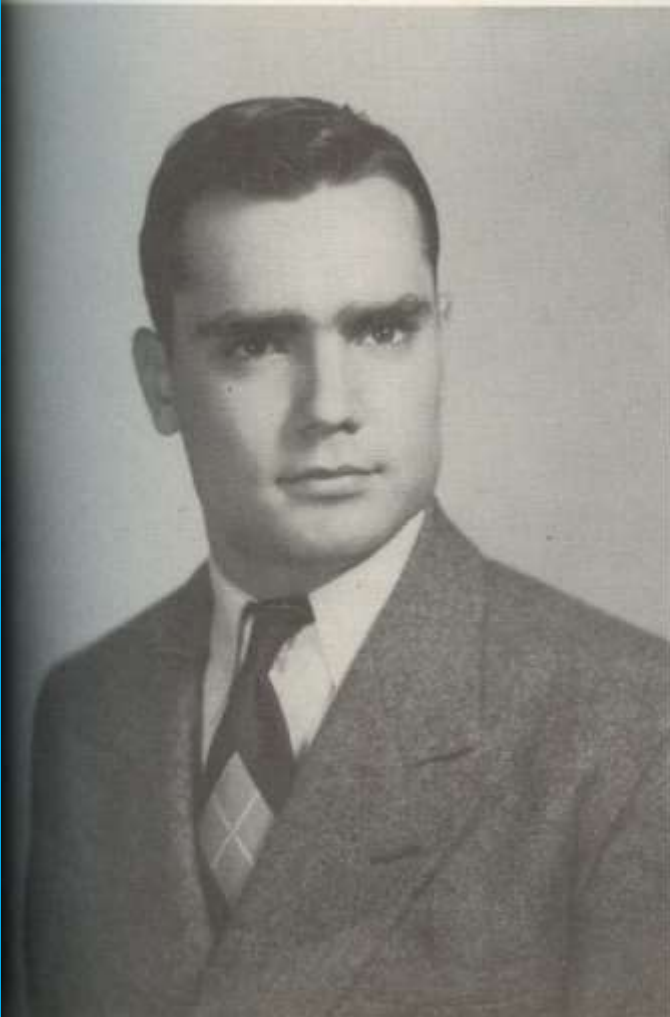
JU
Exa Mae Chamberlain
MOST POPULAR



Ernie Ellis
MOST POPULAR

ORS

Elsie Evans
MOST BEAUTIFUL



W.L. Edwards
MOST HANDSOME



SOPH

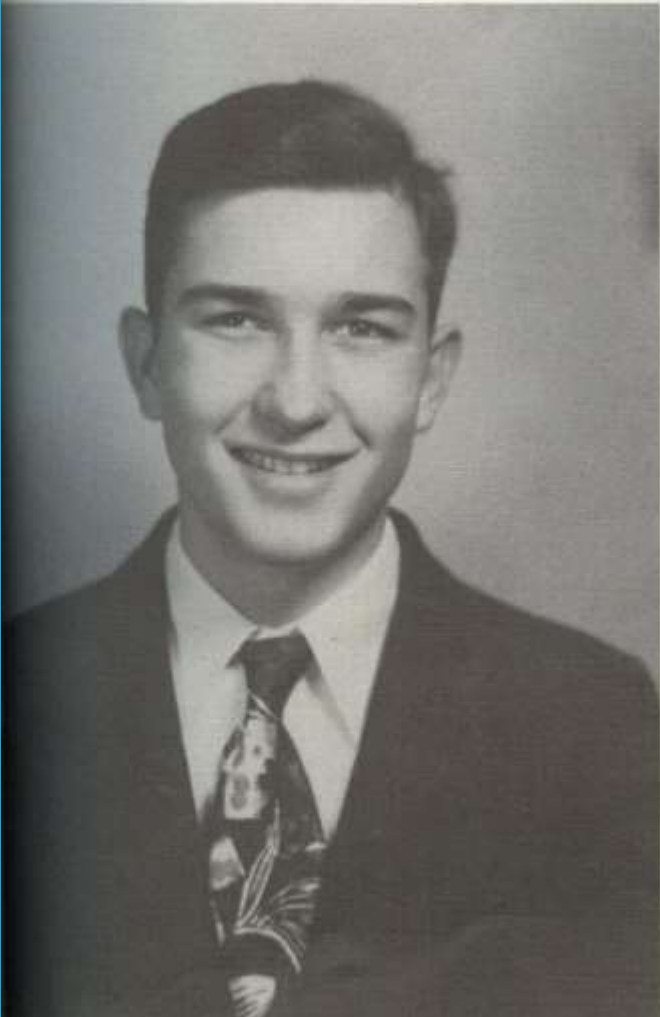
Wanda Hall
MOST POPULAR



Jack Frost
MOST POPULAR

MORES

Bobbie Jean Brady
MOST BEAUTIFUL



Joe White
MOST HANDSOME



F R

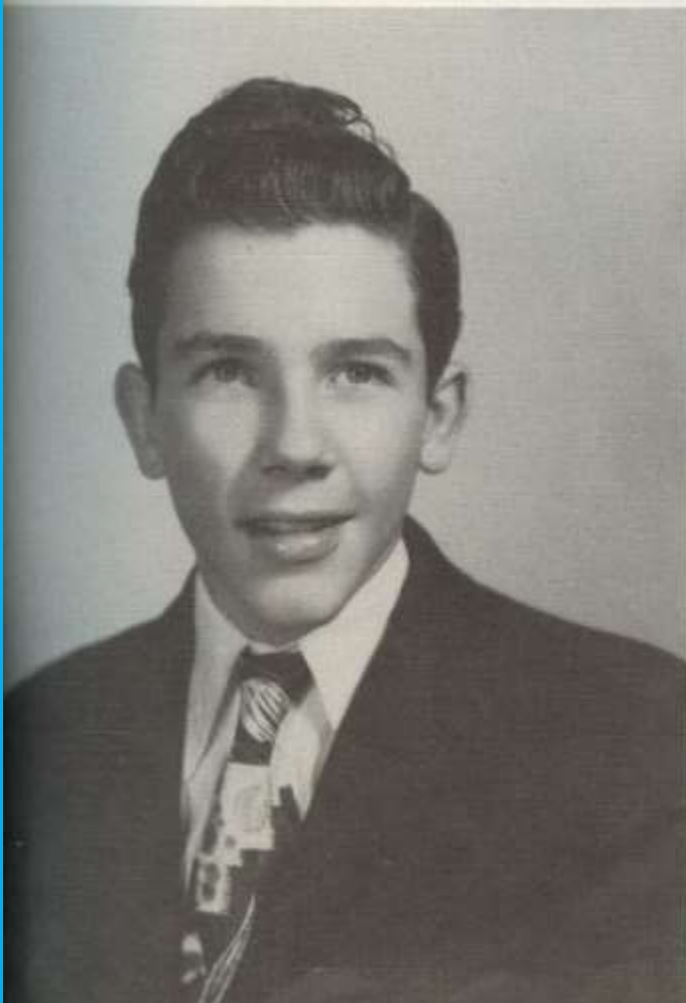
Verma Beth Chambers
MOST POPULAR



Billy Ray Finley
MOST POPULAR

H M E N

Ruth Chenault
MOST BEAUTIFUL



Mickey Christian
MOST HANDSOME

SWEETHEARTS



Bessie Hammond

BAND



Jane Wells

FOOTBALL





ORGANIZATIONS

THE KEYNOTES



Standing: Cecelia Ogle, Mrs. C. Ogle, Sponsor, Doris Goodman. Center: Jane Goodman.
Seated: Carolyn Woodward, Laverne Moers, Jane Wells, Wanda Hall, Agatha Holland.

FOOTBALL MAIDS



Jo Ann Parr, Janice Younts, Wanda Hall, Dolores Paxton, Carolyn Woodward, Exa Mae Chambliss, Ruth Chenault, Myra Su Paxton. Seated: Jane Wells, Sponsor, Miss Jo Milner, Faculty Sponsor.

F. H. A.



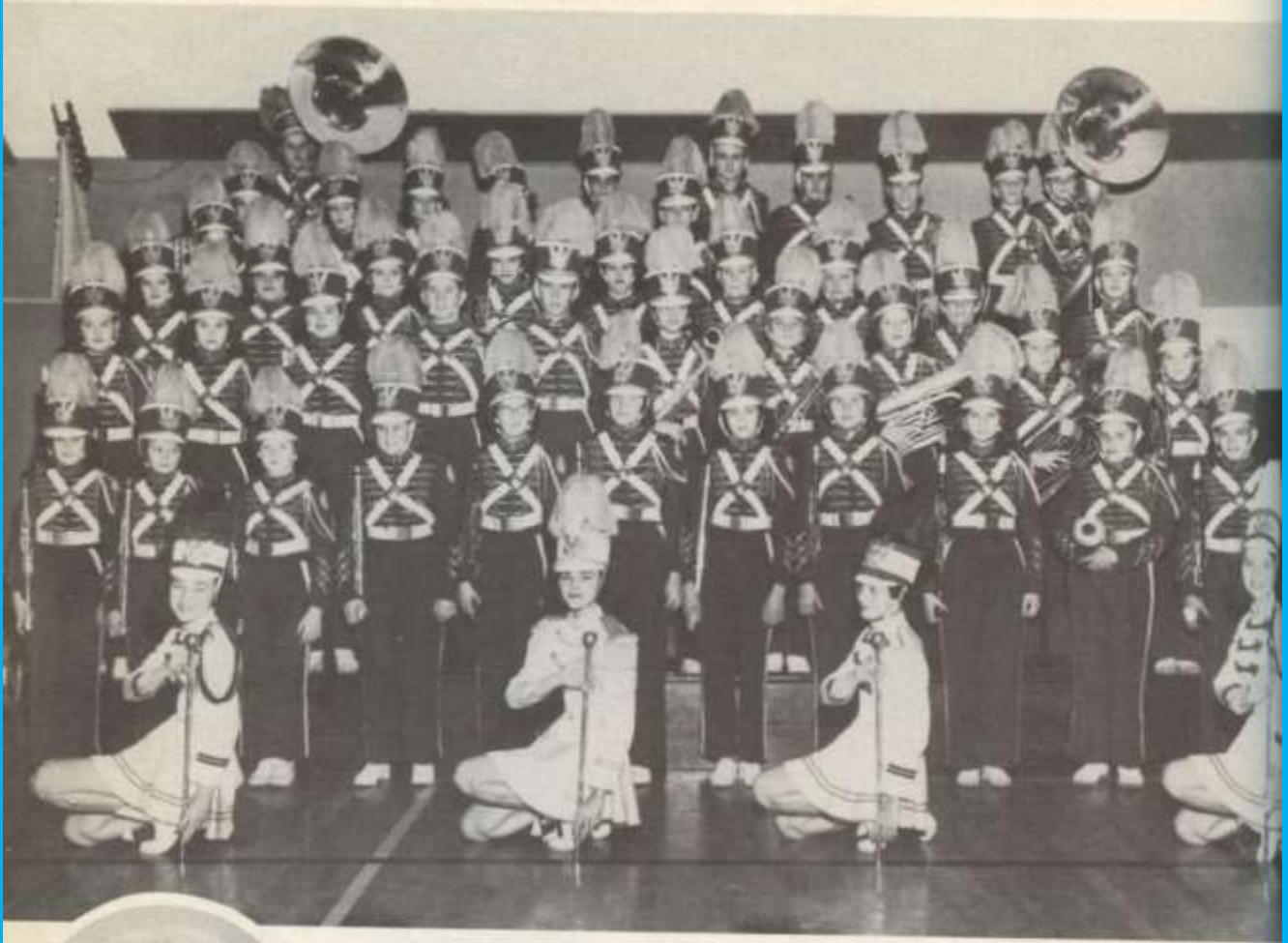
First row: J. Younts, J. A. Parr, B. LeCompte, S. Orr, L. Hubbard, F. A. Baimbridge, J. Mays, B. Hammond. Second row: K. Strid, R. Chenault, M. S. Paxton, W. Windham, K. Eberhart, B. Wallace, H. Thurber, V. Chambless, W. Hall. Third row: J. Weaver, E. Evans, D. Carwile, B. Brady, D. Paxton, W. Crosson, L. Moers, C. Diehl. Fourth row: C. Woodward, C. Ogle, E. Johnson, E. Edmonds, J. Wells, D. D. Jones, C. Lipscomb.

4-H CLUB



First row: J. Mays, B. Kittman; K. Strid, C. Ogle, W. Crosson, D. Carwile, B. Hammond, K. Willis. Second row: B. Curry, F. Baimbridge, L. Lumpkin, E. Johnson, R. Alford, B. Brady, F. Bruce, L. Barber. Third row: B. O'Banion, R. Boone, J. Williamson, T. Slaughter, G. Rayburn, R. Cochran, J. C. Bailey, I. Weaver.

SWEENEY HIGH SCHOOL BAND



Harold Spencer, *Band Director.*

BAND OFFICERS:

<i>President</i>	Jo Ann McKinney
<i>Vice-President</i>	George Parks
<i>Secretary-Treasurer</i>	Jane Wells
<i>Reporter</i>	Bessie Hammond
<i>Sergeant-At-Arms</i>	Billy Kittman
<i>Assistant Director</i>	Sidney Whitlock

DRUM MAJOR:

Jessie Eberhart

TWIRLERS:

Joyce Chambless
 Kay Eberhart
 Hope Thurber





PEP SQUAD



CHEER LEADERS



Windham, Ogle, Parten, Hammond



ANNUAL STAFF 1950



Mrs. Harold Spencer, *Sponsor*
Jimmy Poole, *Editor*
W. L. Edmonds, *Assistant Editor*



Wincie Chenault, *Business Manager*
Exa Mae Chambliss, *Assistant Business Manager*
Jane Wells, *Art Editor*
Derald Carwile, *Assistant Art Editor*



Bessie Hammond, *Sports Editor*
Clifford Strid, *Assistant Sports Editor*
Dolores Paxton, *Literary Editor*
Jane Goodman, *Assistant Literary Editor*



Billy Kittman, *Senior Advisor*
Ernie Ellis, *Junior Advisor*
Wanda Hall, *Sophomore Advisor*
Barbara Wallace, *Freshman Advisor*

Jimmy Poole

Arthur Bayfield

Jessie Eberhart

Billy Curry
(Honda)

Otto Gulierrez

Richard Finley
Leo Finley

Lena Hubbard

Dolores
Daxton

Mena Lee Wallace

Reba Brady

Bessie
Mammone

SENIORS OF 1950

Laverne
Mace

Minnie
Chenault

Joyce Pangborn

Jane Wells

Daniel A.

Williamson

Carol Woodward

Larry Lumpkin

Billy
Kittman

Miss



A T H L E T I C S

Boys' Physical Education FOOTBALL



Back row: Coach Schuchardt, W. L. Edmonds, A. Alford, D Fortenberry, B. Christian, J. Poole, Mgr. J. Frost, Coach Wilson. Middle row: Mgr. Finley, G. Blann, C. Woodward, J. Williamson, P. Finley, T. Slaughter, R. Boone, B. Curry, D. Williamson, J. P. Williams. Front row: D. Christian, F. Bruce, M. Gutierrez, J. C. Barkley, C. Strid, E. Ellis, B. Jones, B. Barfield.



Co-Captains
J. Poole, B. Curry

SEASON RECORD

OPPONENTS	SWEENEY	
West Columbia	0	0
Dickinson	13	0
Missouri City	13	20
Angleton	13	20
*Sugarland	7	18
*Orchard	6	32
*East Bernard	7	6
*Needville	0	21
Bay City "B"	0	28
*Conference	59	145



Coaches
Schuchardt and Wilson



Managers
Finley and Frost



Williamson—Left Half
'48-'49



Finley—Right Half
'48-'49



Curry—Fullback
'47-'48-'49



Ellis—Center
'49



Barfield—Guard
'48-'49



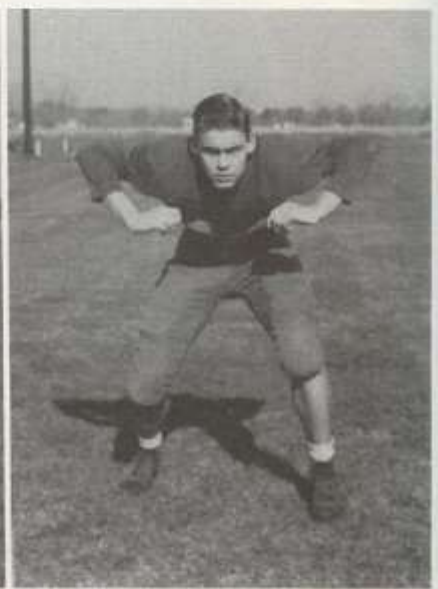
Alford—Tackle
'47-'48-'49



Fortenberry—End
'48-'49



Poole—Quarterback
'47-'48-'49



Strid—Guard
'48-'49



Edmonds—End, Tackle
'47-'49



Slaughter—Tackle
'49



Williams—Guard
'49



Jones—Center
'49



J. Williamson—Tackle



D. Christian—Back



M. Christian—Back



B. Christian—End
'48-'49



Patterson—Back



Woodward—Back



Gutierrez—End



Barclay—Back

1950 DISTRICT CHAMPS



Back row: J. Frost, E. Ellis, A. Alford, J. Poole, R. Finley, D. Fortenberry, W. L. Edmonds, Coach Wilson. Middle row: B. Curry, A. Barfield, C. Strid, B. Christian, L. Finley. Front row: J. P. Williams, C. Smith, B. Jones, B. Barfield, M. Finley, D. Ellis.



Co-Captains

E. Ellis, W. L. Edmonds

CONFERENCE GAMES

OPPONENTS	SWEENY	
Pearland	27	34
Santa Fe	15	51
Deer Park	43	73
Friendswood	18	65
Pearland	36	30
Danbury	15	88
Santa Fe	32	37
*Friendswood	0	1
*Danbury	0	1
Deer Park	23	23
*Forfeit	209	403

JUNIOR HIGH BASKETBALL

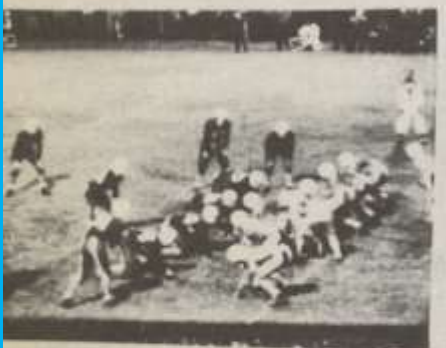
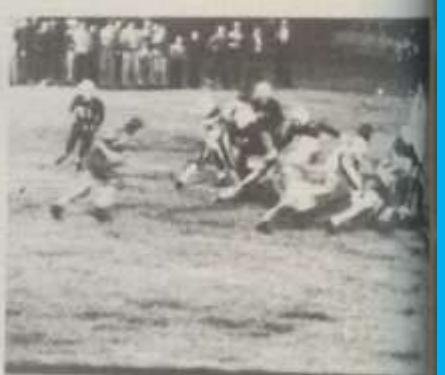
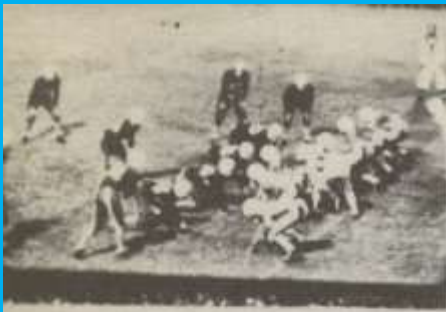


Back row: Coach Schuchardt, B. O'Banion, J. Fortenberry, T. Slaughter, R. Boone.
 Middle row: F. Bruce, G. Wells, D. Christian, G. Bland, B. Carter. Front row: I. Weaver,
 F. Allen, J. Slay, C. Finley, E. Slaughter.

BASEBALL



Back row: C. Smith, D. Fortenberry, G. Alford, P. Finley, B. O'Banion. Second row: C.
 Strid, J. Poole, B. Curry, J. Patterson, J. Kriemeyer, Mgr. First row: Coach Schuchardt,
 J. P. Williams, W. L. Edmonds, J. Finley. Not pictured: T. Slaughter, J. Frost, F. Bruce.



Girls' Physical Education

BASKETBALL



Back row: M. Stoker, Coach; K. Eberhart, J. A. Mays, J. Weaver, N. Orr, V. B. Chambliss, W. Windham, H. Thurber, J. Eberhart, E. M. Chambliss. Second row: N. Hall, B. Wallace, J. A. McKinney, J. Wells, I. Felder, S. Orr. First row: W. Hicks, W. Hall, L. Hubbard, B. Hammond, B. J. Horn, J. A. Parr.

BI-DISTRICT CHAMPIONS



Managers
Chambliss and Eberhart



Co-Captain Lena Hubbard
Captain Bessie Hammond

TUMBLING



VOLLEYBALL





A C T I V I T I E S

FOOTBALL BANQUET



JUNIOR - SENIOR BANQUET



THE SENIOR PLAY

“Hobgoblin House”

CAST

DARIUS KRUPP, the old caretaker of Hobgoblin House	<i>Billy Curry</i>
MISS PRISCILLA CARTER, the present owner	<i>Reba Brady</i>
MARIAN CARTER, her niece	<i>Wincie Cbenault</i>
JILL CARTER, Marian's younger sister	<i>Bestie Hammond</i>
FRANK HARLOW, Marian's fiance	<i>Billy Wayne Carter</i>
JACK LORING, Jill's fiance	<i>Charles Bledsoe</i>
SUSAN PARKINS, the "Henglish 'ousekeeper"	<i>Carolyn Woodward</i>
HENRY GOOBER, the darky gardener	<i>Daniel Williamson</i>
DELILAH WORTS, the darky cook	<i>Delores Paxton</i>
BLUEBEARD BRONSON, an escaped maniac	<i>Larry Lumpkin</i>
BILL WILKINS, his keeper	<i>Billy Kittman</i>
THE HEADLESS PHANTOM	<i>Iris Lynn Felder</i>
STAGE MANAGER—SOUND EFFECTS	<i>Leo Finley</i>
PROMPTER	<i>Laverne Moers</i>
DIRECTORS	<i>Mr. and Mrs. Charles Kelso</i>

Spanish Fiesta



Cecelia Ogle

Childrens' Dance

Presented by
SPANISH CLASSES

Sponsored by
SWEENEY LIONS CLUB



Spanish Fiesta



Spanish Classes to Monterrey...





ADVERTISERS

The
FIRST CAPITOL
State Bank

Member
FEDERAL DEPOSIT INSURANCE CORP.
and
FEDERAL RESERVE SYSTEM

West Columbia

Texas

V. L. CHAMBLISS

OIL FIELD CONSTRUCTION
Sweeny, Texas



Office Phone 185

Res. Phone 22R2

Galloway & Farmer

INSURANCE AGENCY

"Sound Insurance For Your Protection"

Phone 186W

West Columbia, Texas

Compliments of

Texas Division

THE DOW

Chemical Company

Freeport, Texas

THE FIRST

National Bank

of
Bay City, Texas

"YOUR FRIENDLY BANK"
First in Everything



RESOURCES OVER \$9,000,000.00

Compliments of

Taylor Brothers

FURNITURE COMPANY

Bay City, Texas

Taylor Brothers

FUNERAL HOME

*Fresh MEATS
and VEGETABLES*



Lowest Prices

J. G. SMITH
and **BROTHER**

Sweeny, Texas



Latest HOUSEHOLD APPLIANCES

JENN
Furniture Co.

West Columbia — Sweeny

Highest Quality Meats

FRANK'S
Super **MARKET**

OLD OCEAN



Compliments

ROY WRIGHT



WRIGHT CHEVROLET CO.

West Columbia

Texas

REED & DALY

SUPER MARKET



Meats

Vegetables

Canned Goods

PHONE 32

SWEENY, TEXAS

Compliments of

Cherney's
JEWELRY

West Columbia, Texas

MARCAS WEEMS

Lumber Co.

PHONE 131

West Columbia, Texas

Sweeny
FOOD MARKET

Better Foods
For Lower Prices

Sweeny, Texas

Compliments of

Nash
BARBER SHOP

Sweeny

Texas

Compliments of
ROSENWEIG'S
and
Milady's
SHOPPE

1727 7th Street
Phone 623
BAY CITY, TEXAS

Compliments of
OSHMAN'S
Dry Goods

BAY CITY
TEXAS



Drugs
Your
DEPENDABLE
Druggist
BRUNO
Drug Store

West Columbia, Texas

BEST FOOD
IN TOWN

Eli's Cafe

Bay City, Texas

Compliments of
E. D. UPHAM
& Sons

LUMBER CO.

West Columbia, Texas
Phone 4

Quality Groceries
OLD OCEAN
Super
MARKET

Old Ocean, Texas

Nell's
JEWELRY CO.

JEWELER
OPTOMETRIST

Bay City

Texas

Gene's
LEATHER GOODS

BOOTS, BELTS
BILLFOLDS

Bay City

Texas

For Your Variety
Needs

M^{rs} Lemore
5¢ - \$1.00 STORE
West Columbia, Texas

DEPENDABLE
SERVICE

Garrison
TELEPHONE
COMPANY



HERMAN'S *Cafe*
AND
Hi-way
DRIVE-INN

HERMAN JOACHIM, Owner
West Columbia, Texas

Brockman's

Your Department Store

Phone 237
West Columbia, Texas

Lady's Shop

FEATURING ADVERTISED BRANDS
OF WEARING APPAREL
INFANTS WEAR
DRY GOODS AND LINENS

West Columbia, Texas
Phone 161-R2

POND'S
Dry Cleaning

"THERE'S A DIFFERENCE"

Phone 25
West Columbia, Texas

THE *Citizen State* BANK

Sweeny, Texas

"Every Banking Facility For YOU"

We earnestly solicit your account
(Western Union Service)

TOTAL RESOURCES \$315,000.00

Compliments of

Sweeny

SPORTING GOODS
& VARIETY

Sweeny

Texas

**KIMMEY &
BOSWELL**

PIECE GOODS
CLOTHES FOR THE FAMILY

Sweeny

Texas

BARNES-JONES

Lumber Co.

EVERYTHING
TO BUILD ANYTHING

Phone 539

Sweeny

Texas

Compliments of

Sweeny

HARDWARE CO.

Phone 35

Sweeny

Texas

Compliments of

Bledsoe's

GULF SERVICE
STATION

Sweeny

Texas

Compliments

LINDSEY & CURTIS

Lumber Co.

Sweeny

Texas

THE PEOPLE'S
Laundry

S. E. DOUGHTIE, Owner

DRY CLEANING

Dial 461

Bay City

Texas

RUGELEY
Motor Co.

Dealers of

BUICKS

CHEVROLETS

Bay City, Texas

Phones 625 - 626

Compliments of

Gibb's

FURNITURE STORE

1830 Seventh Street

Phone 2600

Bay City

Compliments of

Texas Gulf

SULPHUR COMPANY

New Gulf

Texas

GOOD
FOOD

FOR



PLEASED
GUESTS

JOHN *Sexton* & co.

CHICAGO—LONG ISLAND CITY—PHILADELPHIA
DALLAS—ATLANTA—PITTSBURGH—DETROIT—BOSTON

Compliments of
H & H MUSIC CO.
Inc.

HOUSTON'S LEADING
BAND HOUSE

1015 Fannin Street

FAirfax 9501

Houston 2, Texas

Hunt Tool Co.

BAY CITY, TEXAS

Oil Well Tools
Coring Service
Service Machine Shop
Welding Bits Reconditioned

Portable Equipment

Equipment
Side Wall Sampling
Fishing Tool Repairing
Oil Field Service

BOOSTERS

HOBBY HOUSE, Sweeny
WESTERN AUTO ASSOCIATE STORE, Bay City
DR. DEAN SMITH, Bay City
OLD OCEAN CAFE
JACK R. HUDKINS
M. M. HALL
L. H. VAULRAIN
EDWIN N. WINDLER
AMERICAN DESK MANUFACTURING COMPANY



GIRLS' STATE
BOYS' STATE



Taylor-made SCHOOL ANNUALS



SKILLED CRAFTSMEN — MODERN EQUIPMENT and 35,000 SQUARE FEET OF FLOOR AREA are combined to produce FINE SCHOOL ANNUALS for 1400 schools in twenty-three states



Checking in copy



Composition



Pasting Pictures



Art Work



Cameras



Masking



Plate Making



Printing



Gathering



Binding



Inspection

TAYLOR PUBLISHING COMPANY

P. O. Box 597

DALLAS, TEXAS

6320 Denton Dr.